



# HOW TO INSTALL THE VENTILATOR 301, 302 & 303

## SECTION A

### IMPORTANT

- Contact Ventilation Maximum to determine which product should be used for a cathedral roof.
- If the roofing material is metal, a model #301 ventilator should be installed for every 600 sq ft.

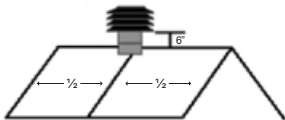
### PRELIMINARY VERIFICATION

- Make sure that the soffits' openings are clear and unobstructed by insulation.
- Any openings in the roof other than Maximum ventilators and soffits must be completely closed (gable louvers, small roof vents, etc.)
- None of the exhaust ducts for the furnace, clothes dryer, kitchen range hood, or bathroom exhaust fan should discharge into the attic or near the soffits. All ducts should be well insulated.
- Verify the presence of a good watertight vapour barrier and that the insulation conforms to construction standards.
- Any access to the attic as well as the framing of this access must be properly insulated according to building standards.

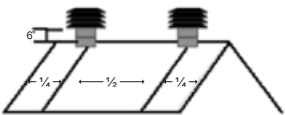
### LOCATION OF THE VENTILATOR

The ventilator(s) should be centered and installed near the roof's peak, the 4 deflectors at least 6 inches above the peak.

#### Installing location of one ventilator



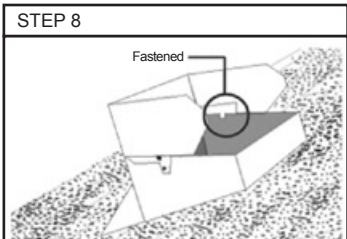
#### Installing location of two ventilators



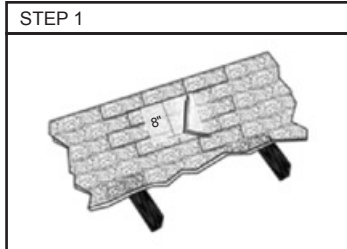
Avoid installing a ventilator near a wall, parapet, chimney or any other device that is positioned higher than the ventilator. There must be a minimum of 4 feet between the ventilator and any possible obstruction.



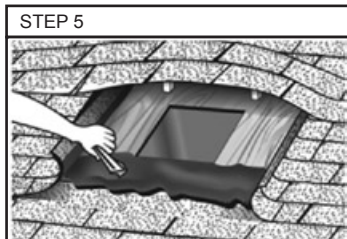
Remove the first two rows of shingles below the hole exposing the sheathing. Carefully remove the nails securing tile shingles around the perimeter of the hole and fold back the shingles exposing the sheathing around the hole.



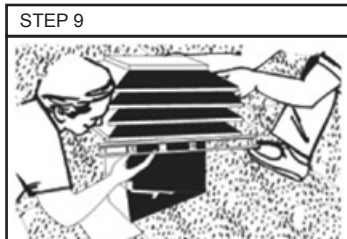
Position the flashing over the hole and screw the flashing onto the sheathing spacing them every 4" around the perimeter of flange and 1" from edge. Apply a generous amount of roofing cement over the back and halfway down both sides onto top of flange, then nail shingles into places.



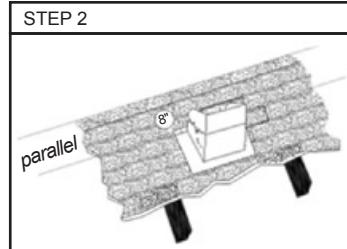
Using a nail indicate the center between the roof's two trusses at a distance of 8" or less from its peak. The steeper the pitch (slope), (ex. 8/12 or 10/12 etc) the closer it should be to the peak. Note: The ventilator should be placed on the roof in such a way that the four deflectors are higher than 6" above the peak. See drawing #8.



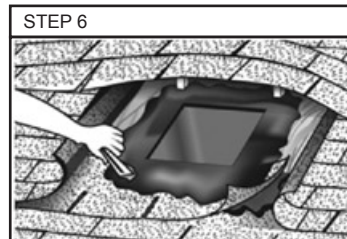
Apply a generous amount of plastic cement at the bottom of the hole and then re-install the first row of shingle at bottom of hole making sure that the top portion is embedded into the plastic cement. Apply plastic cement over the top half of this shingle and then re-install the final row of shingle making sure it is embedded in the plastic cement.



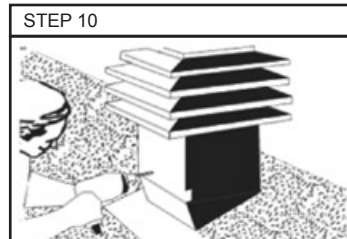
Position the ventilator onto the flashing and make sure it is level.



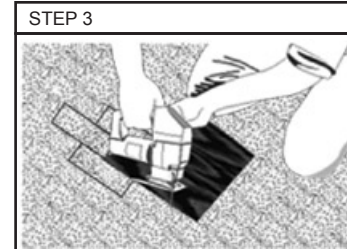
Centre the flashing between the two trusses and using a knife or a piece of chalk, trace around the interior of the flashing, making sure that it is perfectly parallel to the peak of the roof.



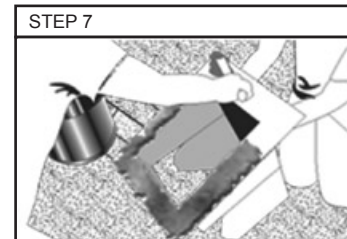
Apply a generous amount of good quality plastic cement around the perimeter of the hole 4 to 5 inches wide.



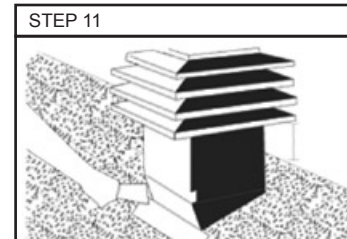
Attach the head of the ventilator onto the flashing making sure it is level, and secure with screws provided into each of perforations.



Use a drill to pierce a hole in the roof, enabling the insertion of jigsaw blade and cut the roof deck.



Apply a generous amount of roofing cement over the perimeter of the underside of flange.



Install a bead of caulking around the juncture of flange, juncture of flange and shingles, over junction of flashing and ventilator, and all exposed screws at the base of the flange, sealing all joints.

## SECTION B

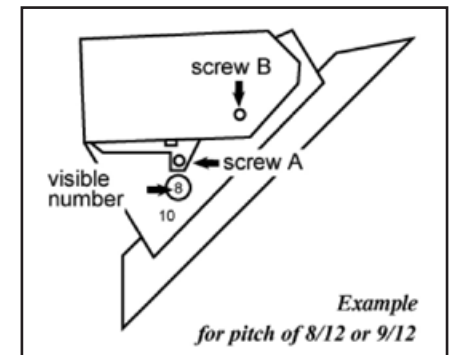
### PITCH GREATER THAN 6/12

N.B.: Disregard this section for ventilator sizes 14x14 inches and larger, (costumed made base flashing are supplied for these sizes)

-Detach the sides of the flashing and lower them to the level of the appropriate number (see chart indicated below). The flashing should cover the dot above the number.

-Screw the flashing at the places indicated. Continue by following step 6, 7 and 8 of Section A.

ROOF PITCH	NUMBER WHICH SHOULD BE VISIBLE	WHERE TO PLACE A SCREW
6/12	6	A
8/12	8	A
10/12	10	A and B



**VENTILATION MAXIMUM** Inc.®

9229 Pierre Bonne,  
Montreal Qc H1E 7J6  
Tel: (514) 648-8011 Fax: (514) 648-9129  
1-800-665-4874  
www.ventilation-maximum.com