

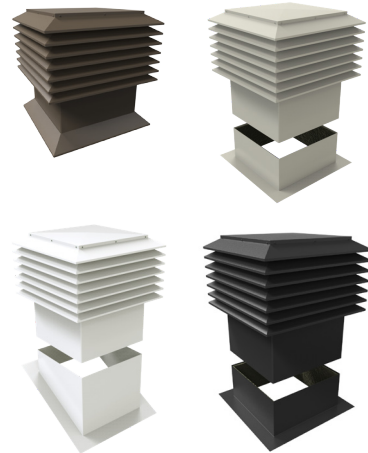
models for INDUSTRIAL AND COMMERCIAL

Model VMAX Standard Louvered Penthouse

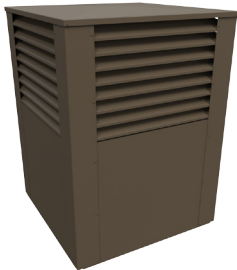


The Maximum Louvered Penthouse was designed to evacuate great volumes of air while still protecting the building from weather infiltrations, even in high gust of winds. Completely rodent proof due to a built-in galvanized wire mesh screen and steel construction.

Roof mount flashings available :



Model VMAX Louvered Penthouse with closed corners



The Maximum Louvered Penthouse was designed to evacuate great volumes of air while still protecting the building from weather infiltrations, even in high gust of winds. Completely rodent proof due to a built-in galvanized wire mesh screen and steel construction.

Roof mount flashings available :



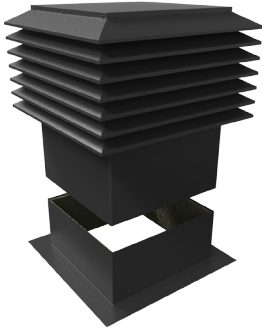
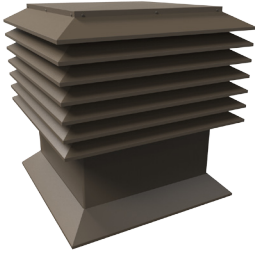
Features

- Steel : Structural galvanized steel ZF75
- Gauge : 20 & 22
- Storm proof : Unique precision engineered deflector system
- Rodent proof : Built-in galvanized wire mesh screen
- Finish : Interior and exterior powder coated polyester baked paint with UV protection
- Warranty : Limited Lifetime Warranty on all manufacturing defects, 5 years on paint & corrosion.

Warning :

Before venting an attic space, make sure that the building in question complies with the Building Code Requirements.

MODEL THE MAXIMUM LOUVERED PENTHOUSE



Description

Unlike the turbine, the Maximum Ventilators are CSA approved and do not require to rotate to prevent water or snow infiltrations. Its unique storm proof system prevents infiltrations while at the same time capturing the wind flow from all directions and at wind velocities as low as 6 km./hr. (4 mi./hr.). With this combination of technology, wind and pressure differentials, a “chimney or, vacuum effect” results in drawing the stale air and moisture out, thus preventing moisture & heat build-up within the attic space.

The Maximum Louvered Penthouse has been designed to evacuate great volumes of air while still protecting the building from weather infiltrations, even in high gust of winds. Completely rodent proof due to a built-in galvanized wire mesh screen and steel construction. It can be designed to be installed onto both slope and flat roofs. Mostly used on commercial, industrial, and agricultural buildings.

Specifications & Features

Note :

A limited selection of special colours are available at a small premium. The opening of the base flashing or wood curb should equal to the opening in the deck for unobstructed air flow. Please refer to chart on the following page for larger dimensions that are available on demand by special order.

The opening of the base flashing should equal to the opening in the deck to allow for unobstructed air flow.

Model : VMAX Standard louvered penthouse

Dimensions Availables : 26 in. x 26 in. up to 46 in. x 46 in.

Base Flashing : Can be fabricated for slope, or flat roof application

Storm Proof : Unique precision engineered deflector system

Solid : Built of structural galvanized steel

Standard Gauge : 20 & 22

Rodent Proof : Built-in galvanized wire mesh screen

Finish : Interior and exterior powder coated polyester baked paint with UV protection

Warranty : Limited Lifetime Warranty on all manufacturing defects, 5 years on paint & corrosion

Available Colours : Black, brown, grey, and white

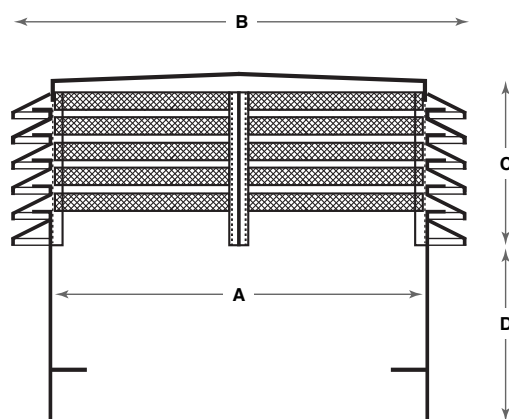
Compliances : CSA, CAN-3-A930M82, ASTM-527



9229 Pierre Bonne, Montreal H1E 7J6
Tel.: 514-648-8011 Fax : 514-648-9129
Watts: (Canada) 1-800-665-4874
www.ventilation-maximum.com



DIMENSIONS AND SPECIAL CHARACTERISTICS



Note :

The Maximum Louvered Penthouse are available by special orders only. Its dimensions (height, width, etc.) and steel gauge can vary according to your specifications. Special flashing can be built to suit your needs.

Fabrication starts once we receive the order which can then take anywhere between four (4) to six (6) weeks delivery depending on your location and season.

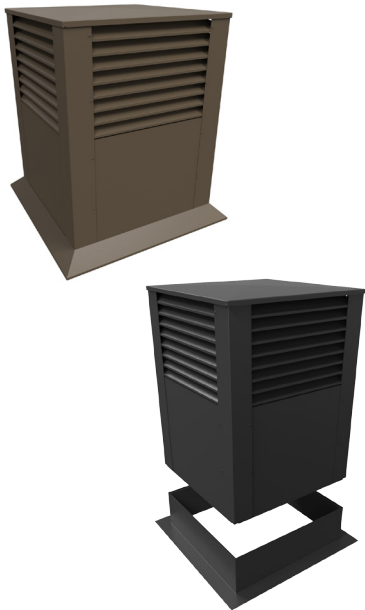
We recommend, so as to not delay your projects, that you place these orders in conjunction with these delays before starting a job.

CODE#	DIMENSIONS				EVACUATION	NUMBER OF DEFLECTORS	STEEL GAUGE USED
	A	B	C	D			
C-26	26"	33.50"	18.5"	20.5"	676 IN. ²	7	20&22
METRIC (mm)	660	851	470	521	0.436 M. ²		
C-28	28"	35.50"	21"	20.5"	784 IN. ²	8	20&22
	711	902	533	521	0.506 M. ²		
C-30	30"	37.50"	21"	20.5"	900 IN. ²	8	20&22
	762	953	533	521	0.581 M. ²		
C-32	32"	39.50"	23.5"	20.5"	1024 IN. ²	9	20&22
	813	1003	597	521	0.661 M. ²		
C-34	34"	41.50"	23.5"	20.5"	1156 IN. ²	9	20&22
	864	1054	597	521	0.746 M. ²		
C-36	36"	43.50"	26"	20.5"	1296 IN. ²	10	20&22
	914	1105	660	521	0.836 M. ²		
C-38	38"	45.50"	26"	20.5"	1444 IN. ²	10	20
	965	1156	660	521	0.932 M. ²		
C-40	40"	47.50"	28.5"	20.5"	1600 IN. ²	11	20
	1016	1207	724	521	1.032 M. ²		
C-42	42"	49.50"	28.5"	20.5"	1764 IN. ²	11	20
	1067	1257	724	521	1.138 M. ²		
C-44	44"	51.50"	31"	20.5"	1936 IN. ²	12	20
	1118	1308	787	521	1.249 M. ²		
C-46	46"	53.50"	31"	20.5"	2116 IN. ²	12	20
	1168	1359	787	521	1.365 M. ²		

Warning :

Before venting an attic space, make sure that the building in question complies with the Building Code Requirements.





MODEL LOUVERED PENTHOUSE WITH CLOSED CORNERS

Description

The Louvered Penthouse with closed corners is available with or without storm-proof deflectors (as used for mechanical evacuation). The Penthouse Ventilators are built in sizes varying from 4 ft. x 4 ft. up to and including 6 ft. x 6 ft. Such characteristics as the quantity of louvers, the type of metal, the total evacuation, the steel gauge (maximum thickness 1/8 in.) and all the dimension of the penthouse can be modified to suit your needs. Special flashing can be built to suit all types of roofs. Different types of louvers to prevent infiltrations are also available on request. Do not hesitate to send us your specifications or needs. When specifying the size of the ventilator, always remember to calculate an allowance for the thickness of wooden curb and roof membrane.

The louvered penthouse are available by special orders only. Fabrication starts once we receive the order which can then take anywhere between four (4) to six (6) weeks delivery depending on your location and season.

We recommend so as to not delay your projects that you place these orders in conjunction with these delays before starting a job.

Note :

A limited selection of special colours are available at a small premium.

The opening of the base flashing or wood curb should equal to the opening in the deck for unobstructed air flow.

Warning :

Before venting an attic space, make sure that the building in question complies with the Building Code Requirements.



9229 Pierre Bonne, Montreal H1E 7J6
Tel.: 514-648-8011 Fax : 514-648-9129
Watts: (Canada) 1-800-665-4874
www.ventilation-maximum.com

